



Title Plan - LT 476690

Survey Number LT 476690
Surveyor Reference E18316 Rosemerryn 5
Surveyor Kevin Martin Hayes
Survey Firm Davie Lovell-Smith Ltd
Surveyor Declaration

Survey Details

Dataset Description Lots 56-72, 81-103, 119, 609-612, 703, 801, 805 & 816 being subdivision of Lot 703 DP 472675
Status Initiated
Land District Canterbury
Survey Class Class A
Submitted Date
Survey Approval Date
Deposit Date

Territorial Authorities

Selwyn District

Comprised In

CT 645842

Created Parcels

Parcels	Parcel Intent	Area	CT Reference
Lot 56 Deposited Plan 476690	Fee Simple Title	0.0600 Ha	659249
Lot 57 Deposited Plan 476690	Fee Simple Title	0.0600 Ha	659250
Lot 58 Deposited Plan 476690	Fee Simple Title	0.0421 Ha	659251
Lot 59 Deposited Plan 476690	Fee Simple Title	0.0416 Ha	659252
Lot 60 Deposited Plan 476690	Fee Simple Title	0.0416 Ha	659253
Lot 61 Deposited Plan 476690	Fee Simple Title	0.0416 Ha	659254
Lot 62 Deposited Plan 476690	Fee Simple Title	0.0416 Ha	659255
Lot 63 Deposited Plan 476690	Fee Simple Title	0.0416 Ha	659256
Lot 64 Deposited Plan 476690	Fee Simple Title	0.0416 Ha	659257
Lot 65 Deposited Plan 476690	Fee Simple Title	0.0740 Ha	659258
Lot 66 Deposited Plan 476690	Fee Simple Title	0.0733 Ha	659259
Lot 67 Deposited Plan 476690	Fee Simple Title	0.0414 Ha	659260
Lot 68 Deposited Plan 476690	Fee Simple Title	0.0414 Ha	659261
Lot 69 Deposited Plan 476690	Fee Simple Title	0.0414 Ha	659262
Lot 70 Deposited Plan 476690	Fee Simple Title	0.0414 Ha	659263
Lot 71 Deposited Plan 476690	Fee Simple Title	0.0414 Ha	659264
Lot 72 Deposited Plan 476690	Fee Simple Title	0.0429 Ha	659265
Lot 81 Deposited Plan 476690	Fee Simple Title	0.0536 Ha	659266
Lot 82 Deposited Plan 476690	Fee Simple Title	0.0550 Ha	659267
Lot 83 Deposited Plan 476690	Fee Simple Title	0.0572 Ha	659268
Lot 84 Deposited Plan 476690	Fee Simple Title	0.0500 Ha	659269
Lot 85 Deposited Plan 476690	Fee Simple Title	0.0510 Ha	659270
Lot 86 Deposited Plan 476690	Fee Simple Title	0.0510 Ha	659271
Lot 87 Deposited Plan 476690	Fee Simple Title	0.0537 Ha	659272



Title Plan - LT 476690

Created Parcels

Parcels	Parcel Intent	Area	CT Reference
Lot 88 Deposited Plan 476690	Fee Simple Title	0.0540 Ha	659273
Lot 89 Deposited Plan 476690	Fee Simple Title	0.0540 Ha	659274
Lot 90 Deposited Plan 476690	Fee Simple Title	0.0541 Ha	659275
Lot 91 Deposited Plan 476690	Fee Simple Title	0.0628 Ha	659276
Lot 92 Deposited Plan 476690	Fee Simple Title	0.0627 Ha	659277
Lot 93 Deposited Plan 476690	Fee Simple Title	0.0627 Ha	659278
Lot 94 Deposited Plan 476690	Fee Simple Title	0.0621 Ha	659279
Lot 95 Deposited Plan 476690	Fee Simple Title	0.0634 Ha	659280
Lot 96 Deposited Plan 476690	Fee Simple Title	0.0640 Ha	659281
Lot 97 Deposited Plan 476690	Fee Simple Title	0.0712 Ha	659282
Lot 98 Deposited Plan 476690	Fee Simple Title	0.0643 Ha	659283
Lot 99 Deposited Plan 476690	Fee Simple Title	0.0607 Ha	659284
Lot 100 Deposited Plan 476690	Fee Simple Title	0.0602 Ha	659285
Lot 101 Deposited Plan 476690	Fee Simple Title	0.0675 Ha	659286
Lot 102 Deposited Plan 476690	Fee Simple Title	0.0719 Ha	659287
Lot 103 Deposited Plan 476690	Fee Simple Title	0.0601 Ha	659288
Lot 119 Deposited Plan 476690	Fee Simple Title	0.1037 Ha	659289
Lot 609 Deposited Plan 476690	Vesting on Deposit for Recreation Reserve (Territorial Authority)	0.2602 Ha	659290
Lot 610 Deposited Plan 476690	Vesting on Deposit for Recreation Reserve (Territorial Authority)	0.0663 Ha	659291
Lot 611 Deposited Plan 476690	Vesting on Deposit for Recreation Reserve (Territorial Authority)	0.0397 Ha	659292
Lot 612 Deposited Plan 476690	Fee Simple Title	0.0005 Ha	659293
Lot 703 Deposited Plan 476690	Fee Simple Title	73.4869 Ha	659294
Lot 801 Deposited Plan 476690	Vesting on Deposit for Road	0.2260 Ha	
Lot 805 Deposited Plan 476690	Vesting on Deposit for Road	0.2874 Ha	
Area C Deposited Plan 476690	Easement		
Area D Deposited Plan 476690	Easement		
Area A Deposited Plan 476690	Easement		
Area B Deposited Plan 476690	Easement		
Lot 816 Deposited Plan 476690	Vesting on Deposit for Road	0.4013 Ha	
Area E Deposited Plan 476690	Easement		
Area F Deposited Plan 476690	Easement		
Total Area		77.0481 Ha	



DAVIE LOVELL·SMITH

PLANNING SURVEYING ENGINEERING

Davie, Lovell-Smith Ltd
 116 Wrights Road,
 PO Box 679, Christchurch 1,
 New Zealand
 Telephone (03) 379-0793,
 E-mail: office@dls.co.nz

Our Ref: E18316

D.P.476690

MEMORANDUM OF EASEMENTS

Purpose	Servient Tenement	Shown	Dominant Tenement
Right of way, rights to drain water & sewage and rights to convey water, gas, electricity, telecommunications & computer media.	Lot 97	C	Lot 98

SCHEDULE OF EASEMENTS IN GROSS

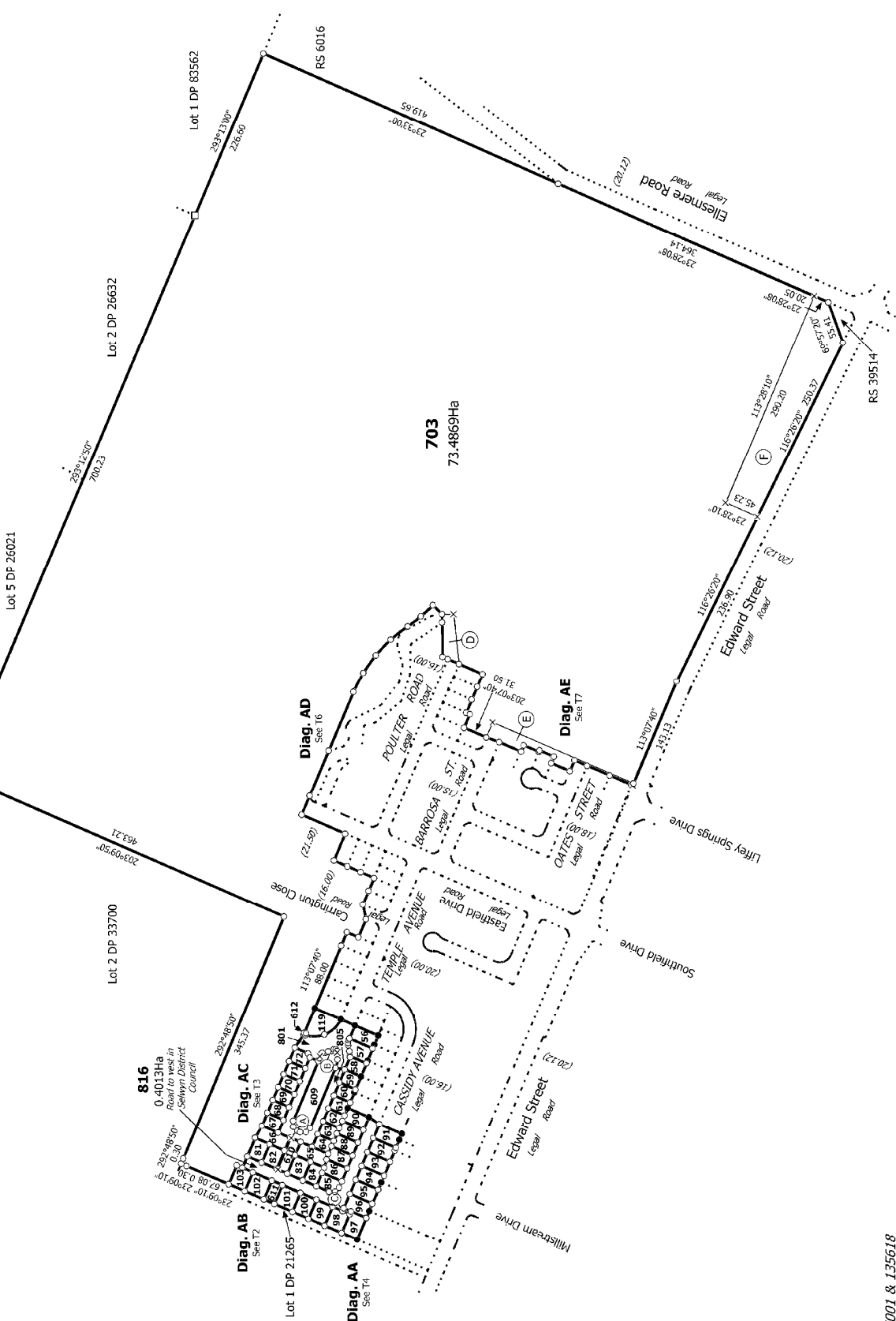
Purpose	Servient Tenement	Shown	Grantee
Right to convey electricity in gross.	Lot 610	A	Orion New Zealand Limited
Right to convey telecommunications and computer media in gross.	Lot 609 Lot 610	B A	Enable Networks Limited

SCHEDULE OF EXISTING EASEMENTS

Purpose	Servient Tenement	Shown	Document
Right to drain water in gross.	Lot 703 Lot 703	D & F E	EI 9370643.10 EI 9672810.8



Diag. A



H18316
RC's 135001 & 135618

Land District: Canterbury

Digitally Generated Plan

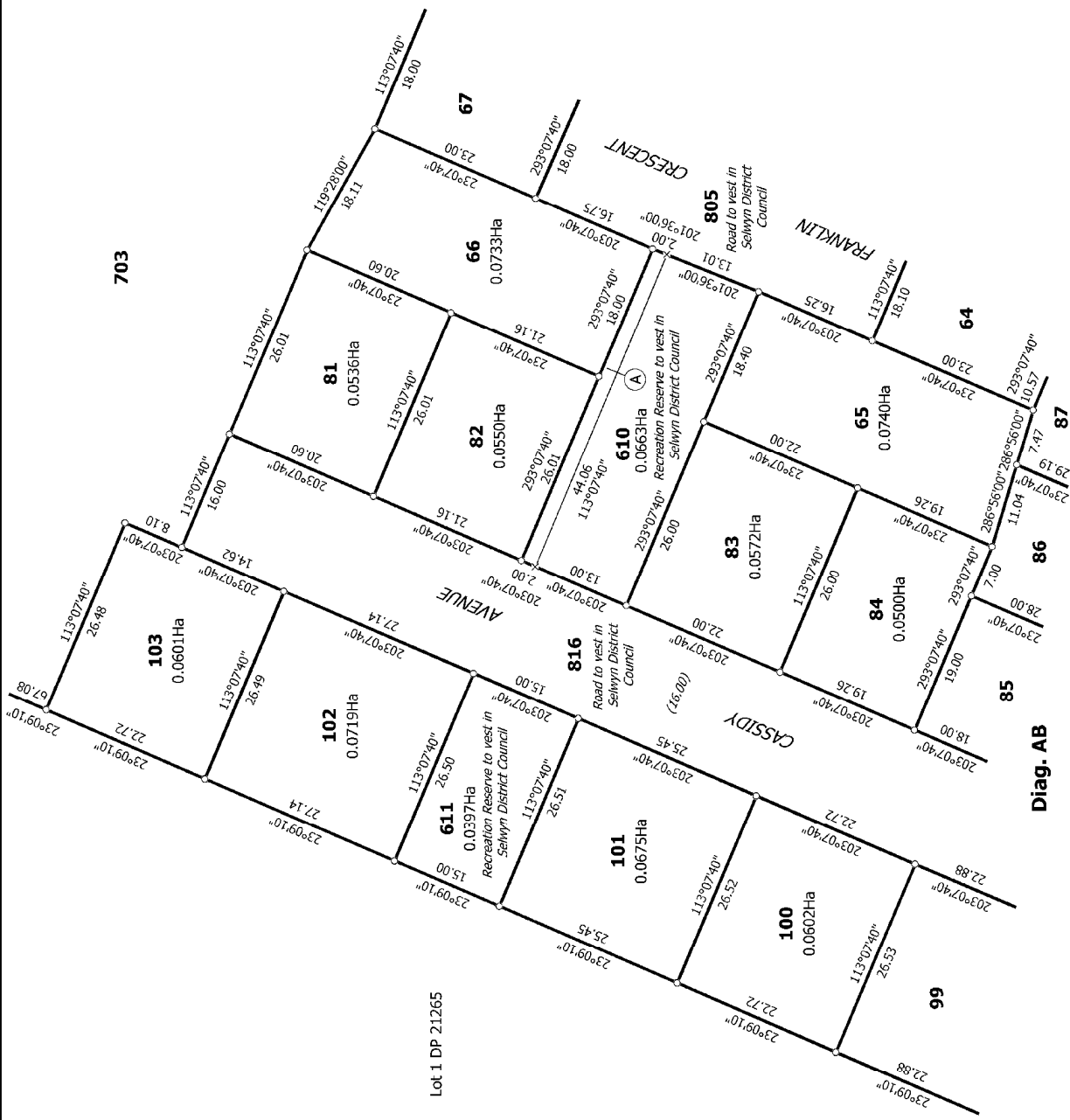
Generated on: 02/07/2014 11:57am Page 4 of 10

Lots 56-72, 81-103, 119, 609-612, 703, 801, 805 & 816 being subdivision of Lot 703 DP 472675

Surveyor: Kevin Martin Hayes
Firm: Dawie Lovell-Smith Ltd

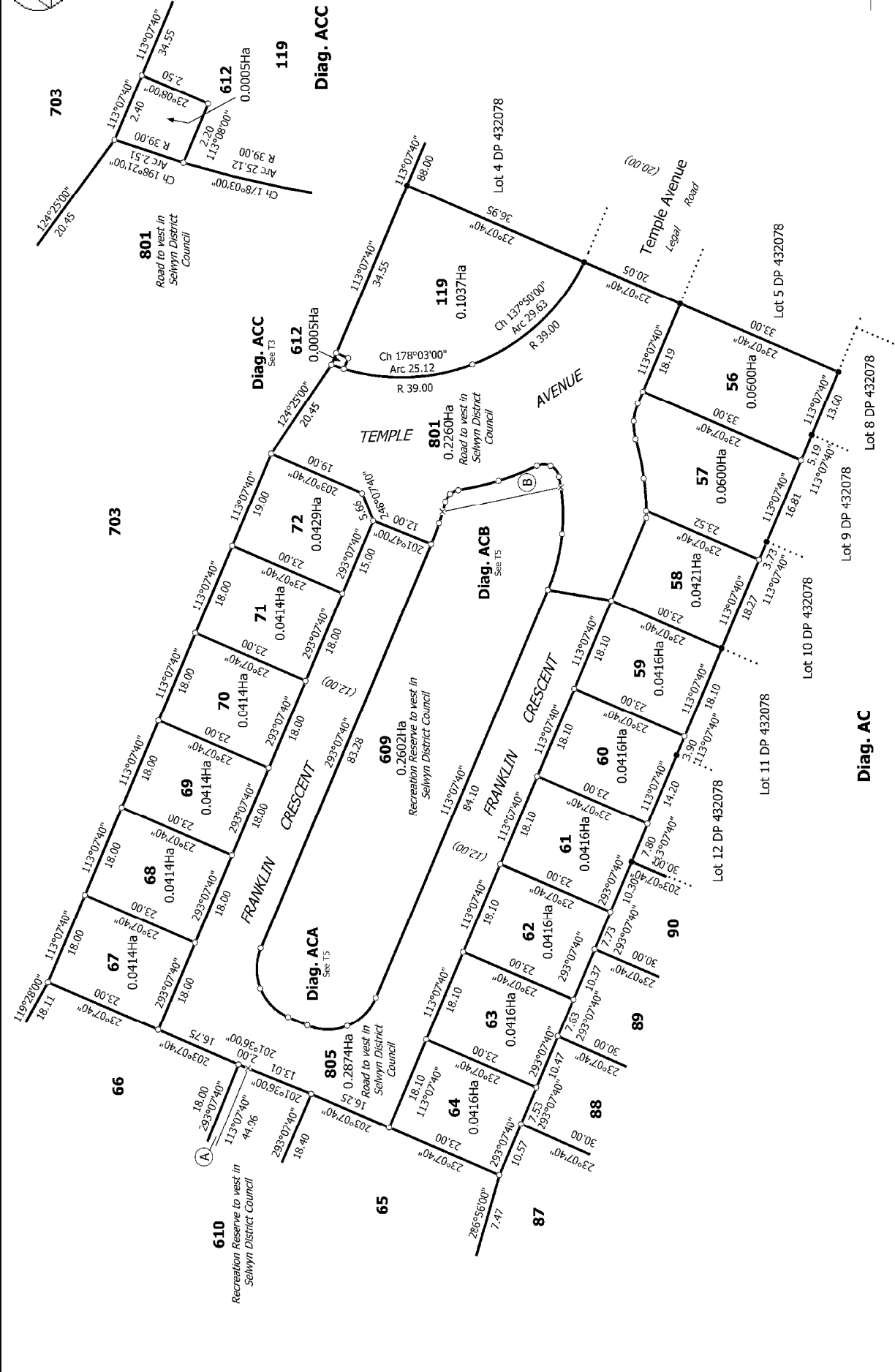
Title Plan
LT 476690
DRAFT

T 117



T 2/7

<p>Land District: Canterbury</p> <p>Digitally Generated Plan</p> <p>Generated on: 02/07/2014 11:52am Page 5 of 10</p>	<p>Lots 56-72, 81-103, 119, 609-612, 703, 801, 805 & 816 being subdivision of Lot 703 DP 472675</p>	<p>Surveyor: Kevin Martin Hayes</p> <p>Firm: Davie Lovell-Smith Ltd</p>
<p>Title Plan LT 476690 DRAFT</p>		<p>703 DP 472675</p>



T 3/17

Land District: Canterbury
 Digitally Generated Plan
 Generated on: 02/07/2014 11:52am Page 6 of 10

Lots 56-72, 81-103, 119, 609-612, 703, 801, 805 & 816 being subdivision of Lot 703 DP 472675

Surveyor: Kevin Martin Hayes
 Firm: Davie Lovell-Smith Ltd

Title Plan LT 476690 DRAFT



Diag. AA

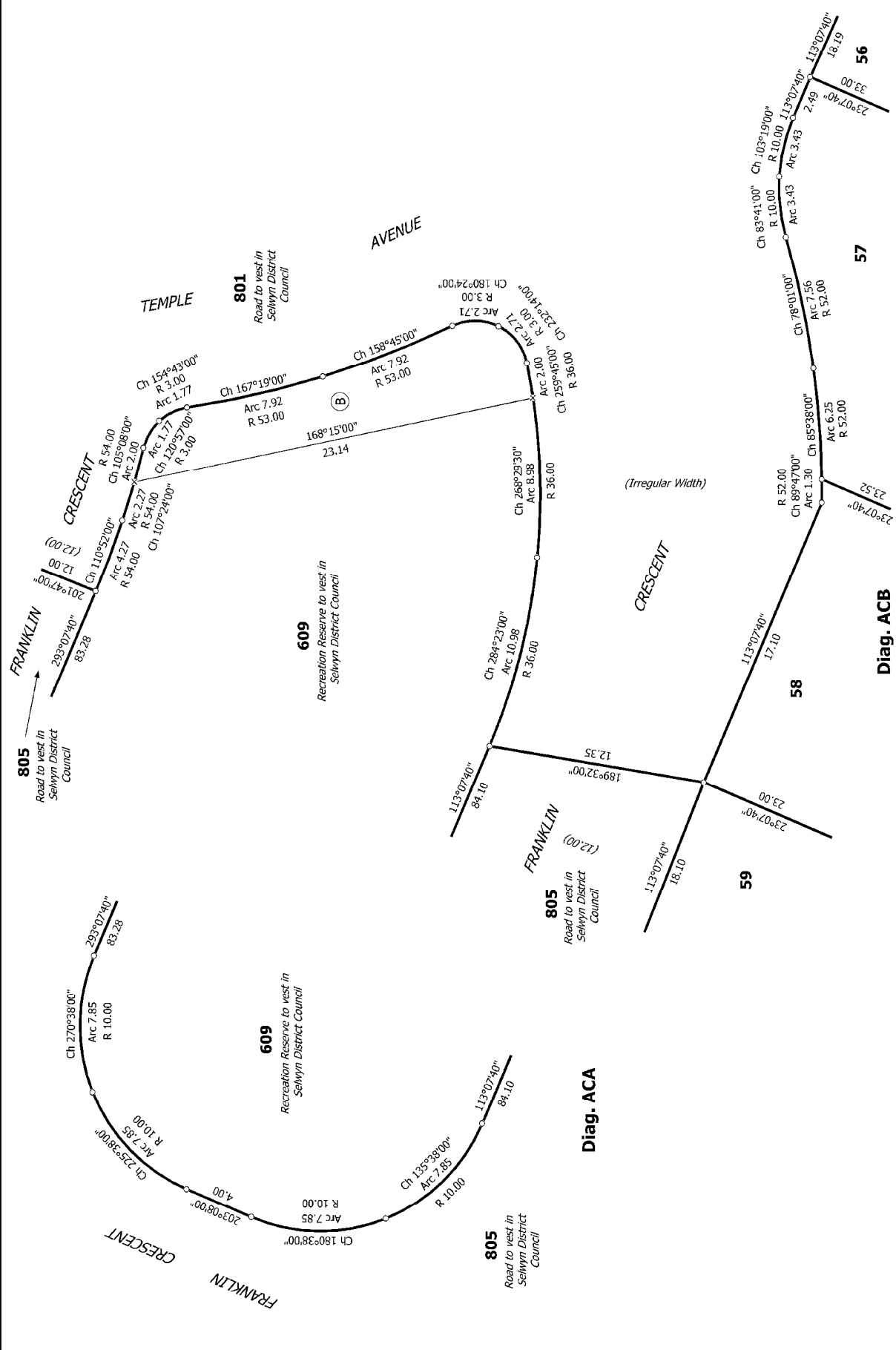
T 417

Title Plan
LT 476690
DRAFT

Surveyor: Kevin Martin Hayes
Firm: Davie Lovell-Smith Ltd

Lots 56-72, 81-103, 119, 609-612, 703, 801, 805 & 816 being subdivision of Lot
703 DP 472675

Land District: Canterbury
Digitally Generated Plan
Generated on: 02/07/2014 11:52am Page 7 of 10



1:517

Land District: Canterbury
 Digitally Generated Plan
 Generated on: 02/07/2014 11:52am Page 8 of 10

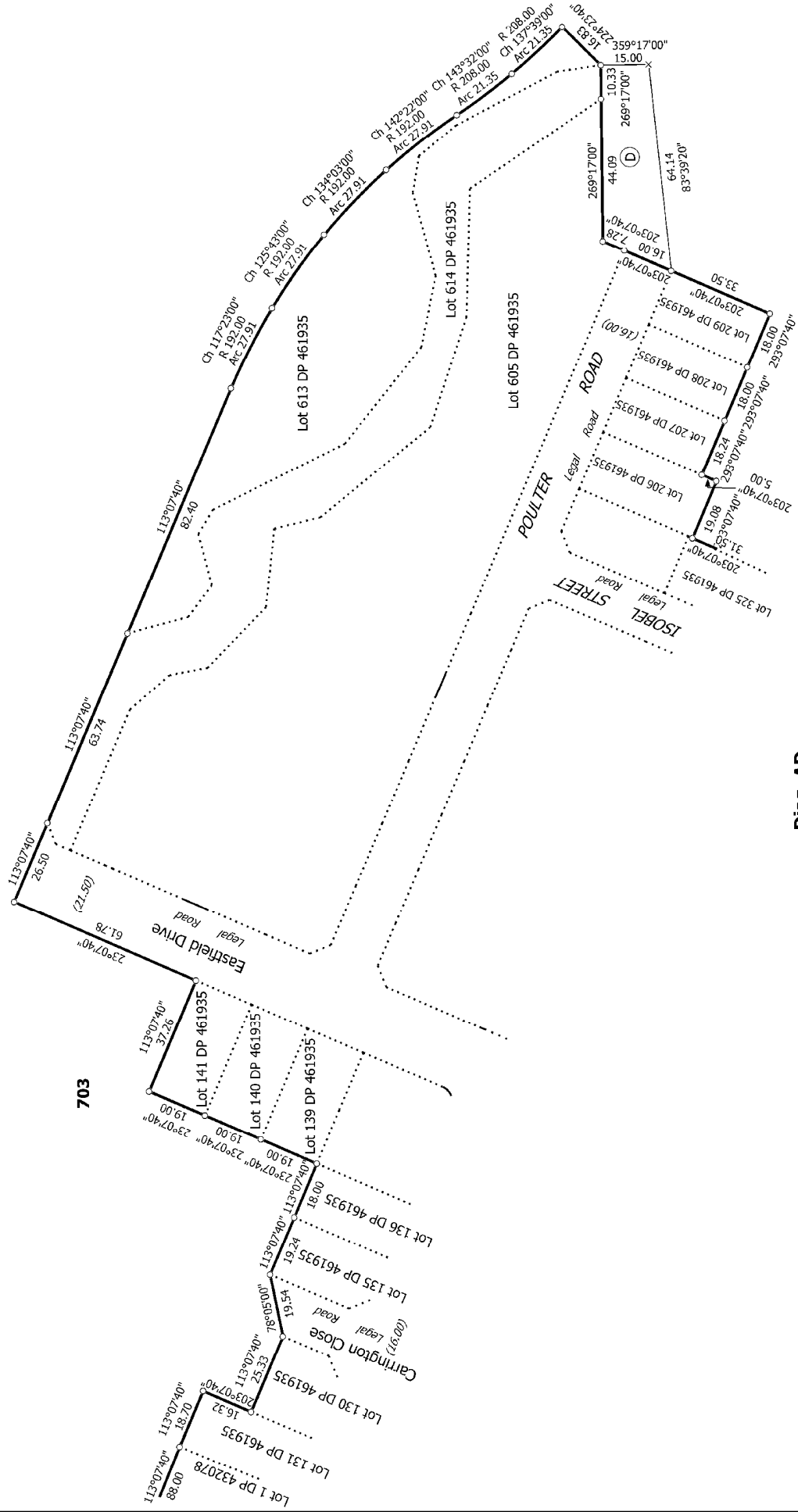
Lots 56-72, 81-103, 119, 609-612, 703, 801, 805 & 816 being subdivision of Lot 703 DP 472675

Surveyor: Kevin Martin Hayes
 Firm: Davie Lovell-Smith Ltd

Title Plan
 LT 476690
 DRAFT

Diag. ACB

Diag. ACA



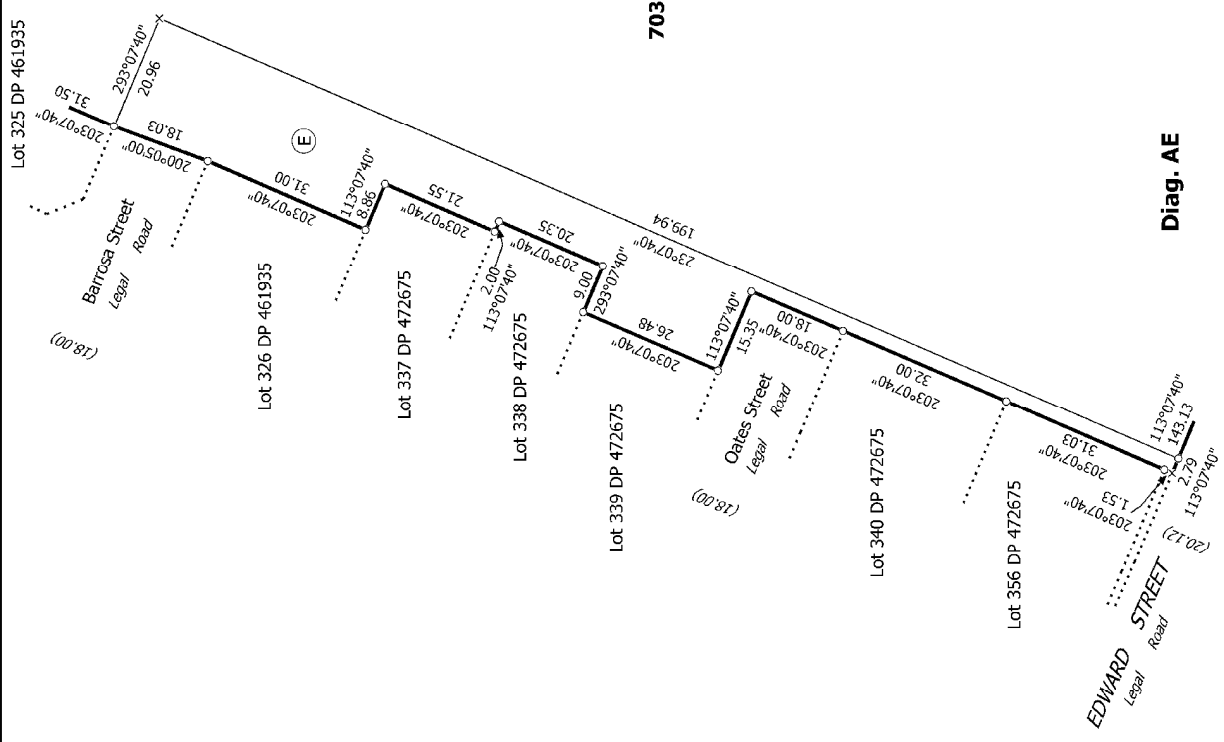
Diag. AD

T 617

Title Plan
LT 476690
DRAFT

Surveyor: Kevin Martin Hayes
Firm: Davis Lovell-Smith Ltd

Lots 56-72, 81-103, 119, 609-612, 703, 801, 805 & 816 being subdivision of Lot 703 DP 472675



T 717

Land District: Canterbury	Surveyor: Kevin Martin Hayes Firm: Dawie Lovell-Smith Ltd	Title Plan LT 476690 DRAFT
Digitally Generated Plan Generated on: 02/07/2014 11:52am Page 10 of 10		Lots 56-72, 81-103, 119, 609-612, 703, 801, 805 & 816 being subdivision of Lot 703 DP 472675